

Aker ARC 311

Aker Arctic



Aker Arctic

Service Operation Vessel for seasonally freezing seas

Expanding renewable energy production into seasonally freezing seas requires reliable year-round access to the offshore installations.

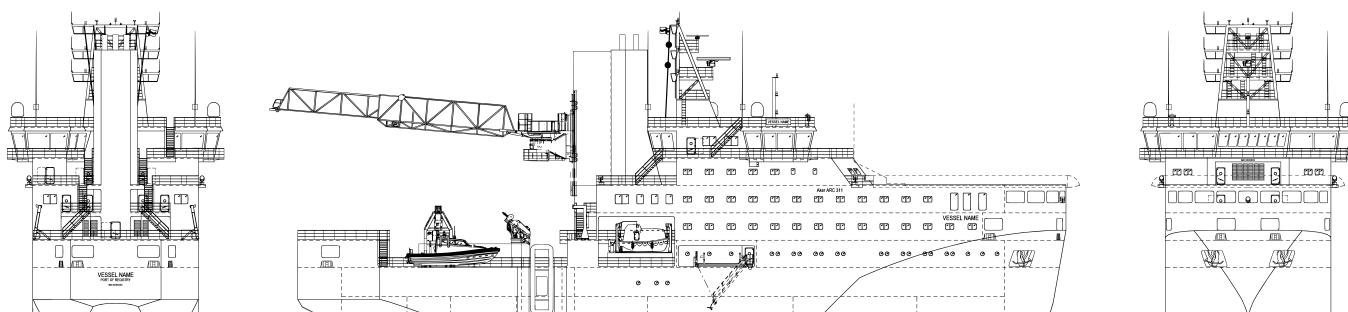
With decades of experience from designing ice-going ships, Aker Arctic has developed a new Service Operation Vessel (SOV) concept that ensures safe, efficient and economical operation in all prevailing operational conditions.

Aker ARC 311 design is available with different hull forms and propulsion configurations that can be tailored to match the environmental envelope of the vessel's intended operational area.

Instead of offering a standard solution, Aker Arctic emphasizes possibility to customize even the most minute aspects of the vessel design according to the client's needs, preferences and wishes.



THE ICE TECHNOLOGY PARTNER



Main dimensions

Independent year-round access to wind turbines is guaranteed with Aker Arctic's Double Acting Ship (DAS™) principle: Aker ARC 311's icebreaking capability is more than 80 cm when operating stern-first.

With a passive roll damping system and DP Class 2 redundancy, Aker ARC 311 can continue working in Beaufort Force 6 conditions.

Aker ARC 311 can be tailored to use alternative fuels such as methanol or ammonia. Battery Energy Storage System (BESS) allows fully electric operation.

Length	84.4 m
Beam	19.2 m
Draft	5.3 m
Warehouse	400 m ²
Working deck	300 m ²
Gangway	16-22 m LAT <i>height about 25 m</i>
Boat landing	Yes
Daughter craft	Yes
Cabins	70
Sauna	Yes, with a sea view

AKER ARCTIC TECHNOLOGY INC

Merenkulkijankatu 6 | FI - 00980 Helsinki | Finland | tel. +358 10 323 6300 | info@akerarctic.fi | www.akerarctic.fi